

# Overview of the Kern River Watershed Coalition Authority

California Citrus Mutual  
Pre-enrollment Workshops



**Kern River  
Watershed**  
Coalition Authority

November 19 & 20, 2013

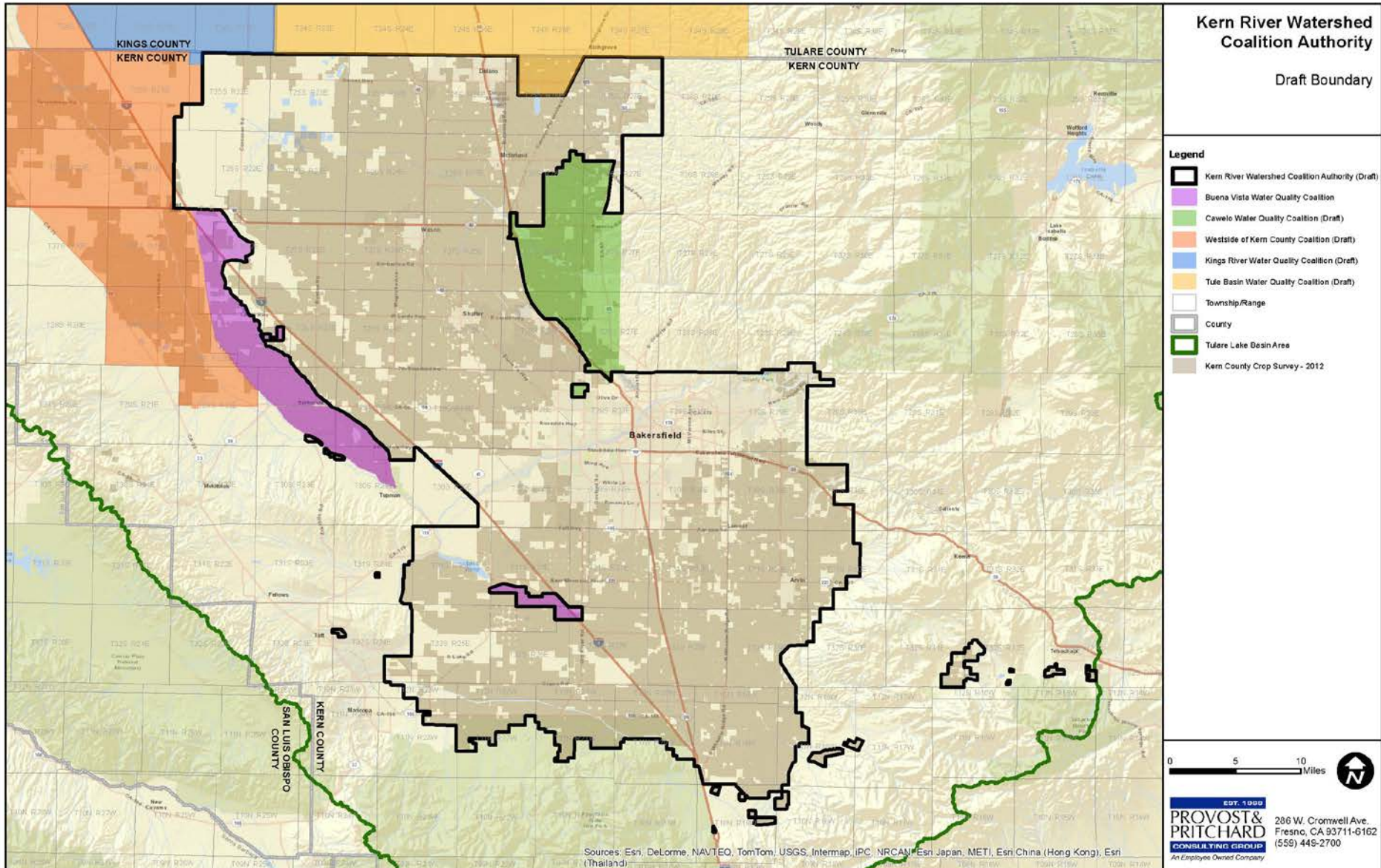
# KRWCA Overview

Joint Powers Authority between:

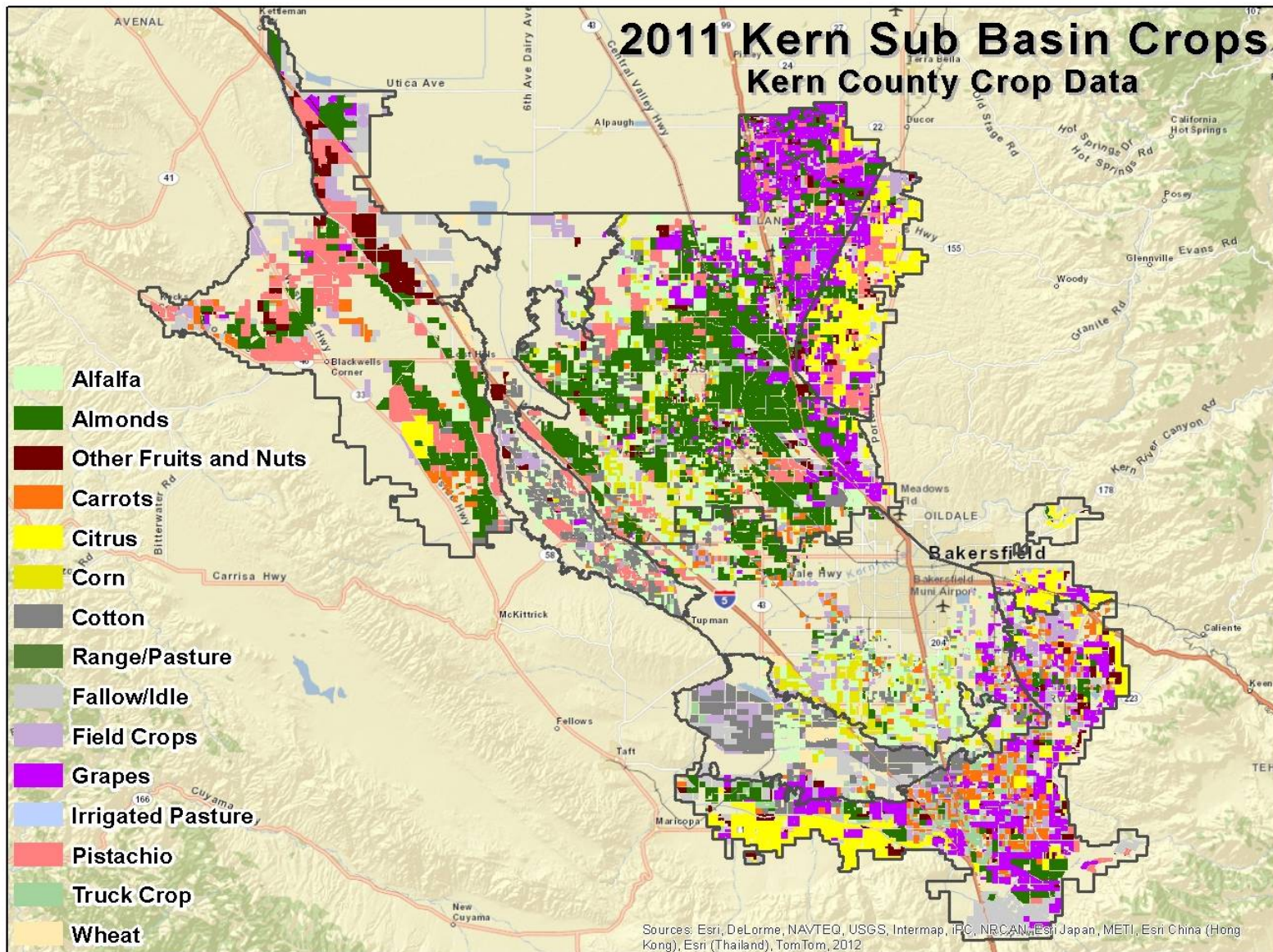
- Arvin-Edison Water Storage District
- Henry Miller Water District
- Kern Delta Water District
- Kern-Tulare Water District
- North Kern Water Storage District
- Olcese Water District
- Rosedale-Rio Bravo Water Storage District
- Semitropic Water Storage District
- Shafter-Wasco Irrigation District
- Wheeler Ridge-Maricopa Water Storage District



# Proposed Coalition Boundaries



# Kern Crop Map



# KRWCA Overview & Goals

## KRWCA Statistics:

- ~645,000 irrigated acres;
- ~900 growers registered with Ag Commissioner.

## KRWCA goals include:

- Facilitate regulatory compliance for the Regional Board General Order for Coalition Members;
- Continued advocacy for growers on water quality issues in various forums.



# KRWCA Overview

KRWCA has already:

- Formed an organization with a Board of Directors and Executive Committee;
- Performed required surface water monitoring and reporting under the previous Conditional Waiver within the Kern River, Poso Creek, White River, Chanac Creek, and El Paso Creek watersheds;
- Participated in General Order development process, preparing technical work illustrating the temporal and spatial disconnect between surface activities and groundwater quality;



# KRWCA Overview

- Proposed the Nitrogen Hazard Index (NHI) as an alternative approach to designate vulnerability areas and to assess priority for monitoring;
- Analyzed General Order compliance cost and submitted a detailed report/testimony to the RWQCB;
- On behalf of growers, have challenged the General Order through applicable administrative and judicial processes;
- Filed an “Application to Serve” to the Regional Board on October 18, 2013 to be an approved coalition under the General Order, which is pending.



# Grower Outreach

Grower Outreach meetings to be held to aid grower enrollment and to supply information:

- Dates to be determined in January, February and March
- Locations possibly to include:
  - Bakersfield;
  - Arvin/Maricopa/Tejon area;
  - Wasco/Shafter area;
  - McFarland/Delano area.
- Dates and locations will be advertised on KRWCA website, through districts, and industry organizations.





# Next Steps

Growers will need to enroll irrigated lands in the KRWCA for coverage under the General Order by mid 2014.

The following will be required for membership:

- Member contact information;
- Irrigated acres, APN, and landowner contact information for all APNs to be enrolled;
- A membership fee.



# Questions?

Kern River Watershed Coalition Authority

P.O. Box 151

Bakersfield, CA 93302

Tel: (661) 616-6500

Fax: (661) 616-6550

E-mail: [admin@krwca.org](mailto:admin@krwca.org)

Website: [www.krwca.org](http://www.krwca.org)

(under construction)



**Kern River  
Watershed**  
Coalition Authority